

T1/CEPT/ISDN-PRI TRANSFORMERS

FEATURES

- Dual through hole models Magnetic
- Most models UL 1459 and BABT EN 60950 recognized
- Isolation Voltage: 1500 Vrms MIN



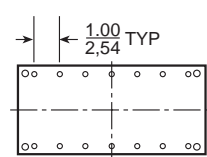
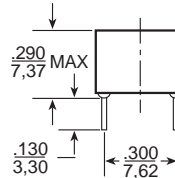
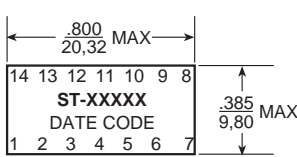
Electrical Specifications @ 25°C

Part Number	Turns Ratio ^B (Pri:Sec ±5%)	OCL @ 25°C (mH MIN)	C _{w/w} (pF MAX)	L _L (μH MAX)	DCR Pri (Ω MAX)	DCR Sec (Ω MAX)	Package/ Schematic	Primary Pins
STANDARD TEMPERATURE RANGE DUAL TRANSFORMERS – OPERATING TEMPERATURE 0°C TO +70°C								
ST-84951	1:2CT & 1:2CT	1.20 & 1.20	35 & 35	0.50 & 0.50	0.70 & 0.70	1.20 & 1.20	DIL2/A	14-12, 5-7
ST-84952	1:2CT & 1:1.36	1.20 & 1.20	35 & 35	0.50 & 0.80	0.80 & 0.80	1.20 & 1.00	DIL2/B	14-12, 5-7
ST-84953	1:2CT & 1:2CT	2.00 & 2.00	50 & 50	0.60 & 0.60	1.00 & 1.00	2.00 & 2.00	DIL2/C	14-12, 10-8
ST-84954	1CT:2CT & 1:1	1.20 & 1.20	30 & 30	0.30-0.55 & 0.50	0.70 & 0.70	1.20 & 0.70	DIL2/D	1-3, 5-7
ST-84955	1:1.26CT & 1.58:1	0.80 & 0.80	30 & 30	0.50 & 0.50	0.60 & 0.60	0.70 & 0.30	DIL2/E	1-3, 5-7
ST-84956	1:1CT & 2:1	0.80 & 0.80	30 & 30	0.60 & 0.60	0.50 & 0.50	0.50 & 0.20	DIL2/E	1-3, 5-7
ST-84957	1CT:1.31 & 2.62:1	1.20 & 1.20	30 & 30	0.80 & 0.80	0.60 & 0.60	0.50 & 0.30	DIL2/E	1-3, 5-7
ST-85565	1:1.15CT & 1:2CT	1.50 & 1.20	35 & 40	0.60 & 0.50	0.70 & 0.70	1.10 & 1.30	DIL1/A	14-12, 5-7
ST-85566	1:1/1.26 & 1:2CT	1.50 & 1.20	40 & 40	0.50 & 0.40	0.70 & 0.70	0.90 & 1.30	DIL1/A	14-12, 5-7
EXTENDED TEMPERATURE RANGE DUAL TRANSFORMERS – OPERATING TEMPERATURE -40°C TO +85°C								
ST-85567	1:1.15CT & 1:2CT	1.50 & 1.20	40 & 60	0.80 & 0.80	0.90 & 0.90	1.00 & 1.70	DIL1/A	14-12, 5-7
ST-85568	1:1/1.26 & 1:2CT	1.50 & 1.20	50 & 60	0.80 & 0.80	0.90 & 0.90	1.00 & 1.70	DIL1/A	14-12, 5-7
ST-85774	1CT:2CT & 1:1.36CT	1.20 & 1.20	50 & 50	0.96 & 0.80	1.00 & 1.00	1.70 & 1.20	DIL1/G	14-12, 5-7
ST-88618	1CT:1CT & 3CT:1CT:25	1.20 & 32.0	40 & 65	0.80 & 0.80	1.00 & 3.00	1.00 & 1.20	DIL3/F	1-3, 11-9
ST-84950	1CT:1CT & 1CT:3CT:1	1.20 & 0.60	50 & 50	0.80 & 0.80	1.00 & 0.80	1.00 & 2.00	DIL3/F	1-3, 4-6

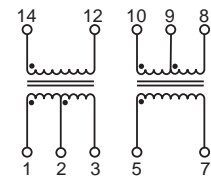
Mechanicals

Schematics

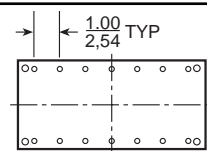
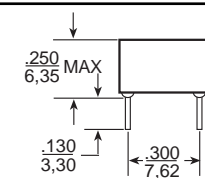
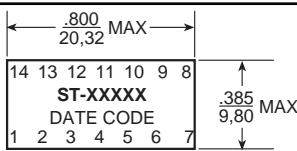
DIL3



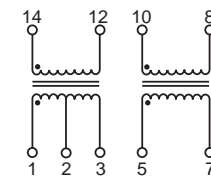
A



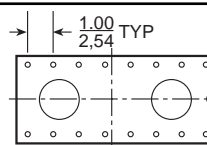
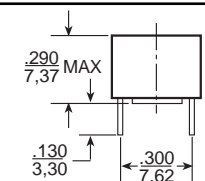
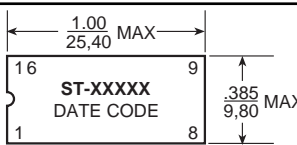
DIL3



B

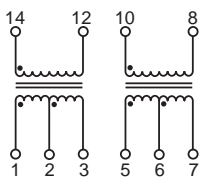


DIL3

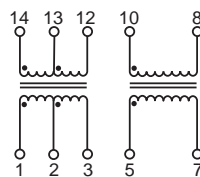


Note: Leads are 24 AWG solderable. Dimensions: $\frac{\text{Inches}}{\text{mm}}$ Unless otherwise specified all tolerances are ± 0.010 / 0.25

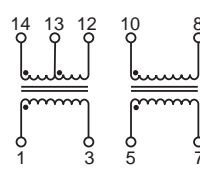
C



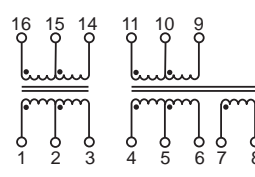
D



E



F



G

